

CRITERION 8: INFRASTRUCTURE (75)

8.1. Classrooms and Learning facilities (25)

8.1.A Adequate well -equipped Classrooms to meet the curriculum

Mulshi Institute of Business Management is located at Mulshi Campus of Ignited Minds Society in a vast land admeasuring 13.13 acres on a plateau of majestic Sahyadri hills. The serene ambience of Mulshi Campus is conducive for learning.

Further, Mulshi Campus is having state-of-the-art infrastructure to support quality teaching learning process. The institute has well defined policy for creation and enhancement of the infrastructural facilities ahead of needs and has always taken care to make the infrastructure available to suit the AICTE norms.

Classrooms are spacious, voluminous and well-ventilated with abundant natural light to provide the right ambience for an effective learning experience. The institution has adequate number of Class Rooms, Seminar Hall, Tutorial Rooms, Library, IT Lab. Etc.

Further, structure and built-up of the classroom provide opportunity to the faculty to carry out the activities like, presentations, small role plays, demonstrations and group discussions very important in management education. In addition, Tutorial rooms provide trainer the opportunity to counsel students in small groups. Computer Laboratory/Center is well equipped with required software and data analysis tools.

8.1.B Availability of E- learning Facilities, Utilizations, Initiatives to ensure students learning

In modern education system today e-learning has compliment lecturers' effort in so many ways such as in the classroom, in the area of research etc. which assist in transforming teaching and learning with a student-centered approach. Technologies are used merely to replicate lectures in classrooms with the advantage that students can have access to them whenever and wherever as long as they have the internet connection. It enhances teachers' presence and aid teaching delivery by supplementing lectures with PowerPoint presentations. Our Smart Classes open doors to digital teaching and learning methods for both the teachers and the

students by coordinating latest advancements in technology with academics. The classes are well supported by audio visual aids, interactive screens and a projector so that a conducive teaching and learning atmosphere is built.

Modem, Printers, Memory cards, Video conferencing. Computers Personal digital assistants Hard disk drives Video/video tapes Virtual classroom, Network Flexible learning toolbox. Interactive Flat Panels, Local Area Network. Software packages, Internet facilities, Virtual library, Wi-Fi, Email, E-books and YouTube are available round the clock.

The institution has adequate number of **Class Room** equipped with **ICT facility** that aid the faculty members to adopt appropriate teaching methodology and make the practices like use of online resources. Classrooms can make use of **Wi-Fi enabled campus**.

Computer Laboratory/Center is well equipped with required software and data analysis tools. The spare capacity and facilities of the laboratories are utilized by the students and faculty to accomplish extra lab practice, skill development, and innovative work of their choice. There are 84 computers having Wi-Fi facility and UPS power backup. Further, adequate IT infrastructure is provided to faculty and other departments such as administration, finance and accounts, student cells, and other support staff etc.

Well designed and fully equipped **Seminar Hall** does exist to interact with a large number of students/participants for expert lectures/conferences etc. A LAN based **Language lab**. is having software, hardware including peripherals to support its function. Other facilities that are important such as **Admission Office, Placement Office, Student Activity Area, Girls Common Room, Boys Common Room, CCTV cameras, and 62.5 KVA Generators** are available in addition to Administrative, Amenities, and Circulation areas of the College Building.

Table: Details of available classrooms, tutorial rooms, laboratories, seminar halls and available support facilities

Sr. N0	Description	Area in sq. m.	E-learning Facility	Capacity of Students
1	Classroom -I	75.37	LCD Screen, Projector, Computer, Wi-Fi	30 Double seated Benches for 60 students
2	Classroom -II	75.37	Interactive Flat Panel, Wi-Fi	30 Double seated Benches for 60 students
3	Classroom – III	75.37	LCD Screen, Projector, Computer, Wi-Fi	30 Double seated Benches for 60 students
4	Classroom – IV	78.37	Interactive Flat Panel, Wi-Fi	30 Double seated Benches for 60 students
5	Seminar Hall	130.00	LCD Screen, Projector, Computer, Wi-Fi	120 Single Chairs for 120 students
6	Computer Laboratory	150.74	Computers, Projector, Screen	40 Single Chairs for 40 Students
7	Language Laboratory	53.00	Language Lab Software, Computers	25 Single Chairs for 25 Students
8	Digital Library	57.15	Multimedia Computers, EBSCO Management Elite, KOHA	10 single seated chairs for 10 students
9	Learning Management Software	30.00	With HoD	For Faculty and Students use

8.2 Library (20)

MIBM firmly believes that backbone of any good institute is its Library and therefor make it accessible on all 7 days with 24hours to all users. Library is using KOHA system. Quality of learning resources (hard/soft) are made available to students and faculty of MIBM as per AICTE norms. Unlimited Reference books can be issued by students. Now-a-days, students prefer e-books and therefore, large number of e-books is made available both through KOHA and LMS. Journals, magazines and newspapers are available to update knowledge on current affairs to our students.

8.2.A Availability of relevant learning resources including e-Resources and Digital Library

Table: Library Details

Particulars	2022-23	2023-24	2024-25
Books			
No. of Titles	3655	3755	3755
No. of Volumes	7050	7560	7560
Journals			
No. published at Abroad	6	9	9
No. published at India	9	15	15
e-Books			
No. of Titles	3850	4200	4200
No. of Volumes	3850	4200	4200
Library Facilities			
e-Journal Subscription	EBSCO	EBSCO	EBSCO
Internet Bandwidth in MBPS	100	100	100
Reprography	Yes	Yes	Yes
Multimedia PCs	11	11	11

Particulars	2022-23	2023-24	2024-25
Library Mgt. SW	Yes (KOHA)	Yes (KOHA)	Yes (KOHA)

8.2.B Accessibility to students:

Access to the students for Library from anywhere. The institute has user friendly & fully automated 'Koha Software' installed in 2020 as Integrated Library Management System (ILMS). KOHA is an integrated software package encompassing all aspects of library management. It allows Book Accession e-register and Online Public Access Catalogue. Further easy search the database using important fields is possible. It supports online stock verification. Efficient circulation management system allows sorting / printing large number of reports and can export into Excel file formats. It provides interface to barcode scanners / printers / smart card using user ID and password for various menus. Strong in database security, backup and recovery. Friendly in customizable search and has circulation and borrower management.

Total Library Area: 102.35 Sq. m.

Total Seating Capacity: 60 Students

Working Hours: Library is open during 9:00 am to 9:00 pm on all working days

Newspapers: English Newspapers are available on daily basis.

Library Manual for its use is available on Institute's website at

<https://www.mgi.ac.in/mandatory-disclosures>

1.3 IT Infrastructure and Learning Management (30)

8.3. A: Availability of composite hardware, software, network resources and services required for the existence, operation and management of institutions IT environment

There is a Centre for Computer and Network at the institution level. PCs and Desktops are available. Anti-virus software is also in use. MS office and MS Windows are installed in all systems. Laptops, laser jet printers, scanners are available adequately. Internet facility and Wi-Fi are available with a speed of 100 MBPS.

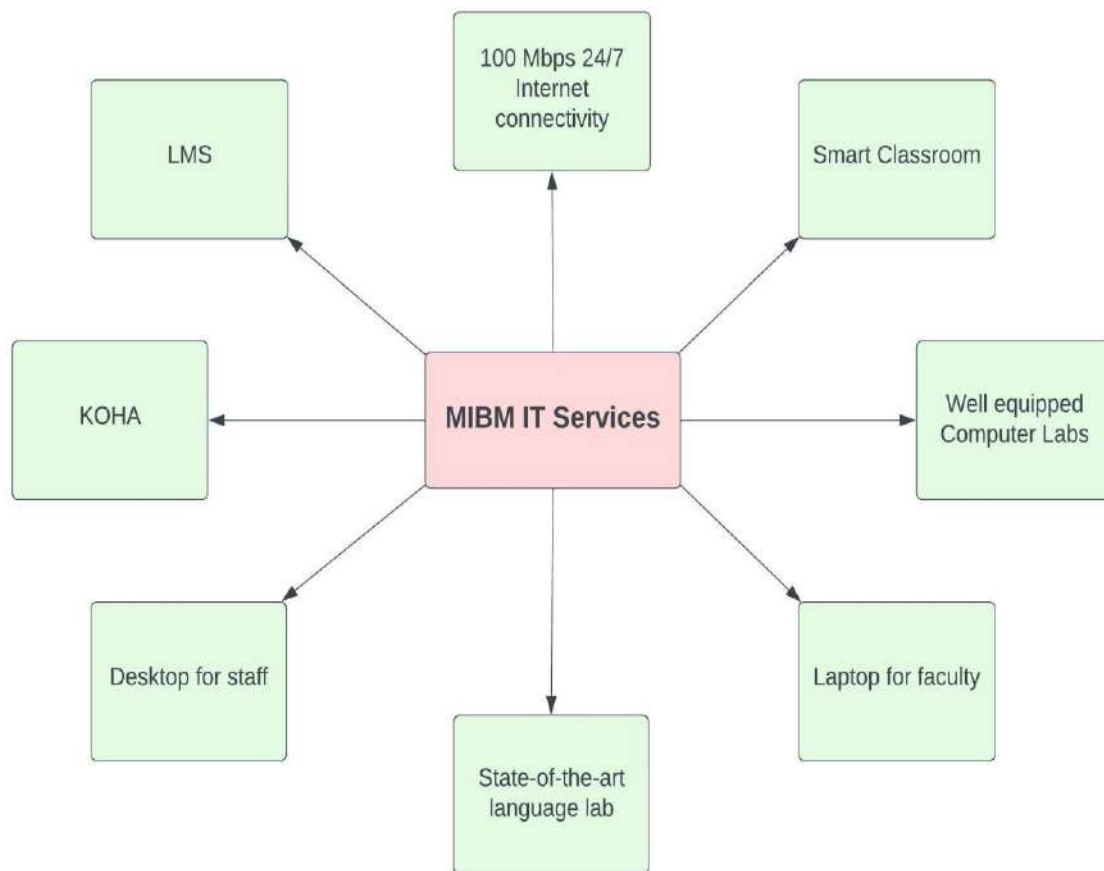


Figure MIBM IT Services

Table: Computer Center details

Particulars		2022-23	2023-24	2024-25
PCs/Laptop exclusively available to students	Total	30	30	30
	Old	25	22	20
	New	5	8	10
PCs/Laptop available in Library	Total	11	11	11
	Old	9	10	8
	New	2	1	3
PCs/Laptop available in Administrative Office		2	3	5
PCs/Laptop available to Faculty Members		13	15	17
Number of PCs/Laptop in language lab	Total	15	15	15
	Old	11	12	11
	New	4	3	4
Internet Bandwidth in MBPS		100	100	100
Number of Legal Application software		40	49	52
Printers available to student	Total	4	4	5
	Old	3	4	4
	New	1	0	1
Number of A1 Size Color Printers		0	0	1

Number of Legal System software	2	2	2
Number of Open-Source Software	1	1	1

Table: List of Software's available

Part Number	Product Description	Quantity
2UJ-00011	Desktop Education ALng LSA OLV E 1Y Acad Enterprise Microsoft 365	30
KOHA Version 16.5	Free Download	1
Language lab. Software	English Wordsworth Language Lab Software (EWL), Bureau for health and Education Status Upliftment	1
Plagiarism Software	Plagiarism Checker X2022 Professional edition	1
LMS	Free download	1

IT facilities

- As per the need of the curriculum, the institution frequently reviews and upgrades its IT facilities and has required computing facilities which include hardware, software and networking as mentioned above in Table 4&5.
- Suggestions and recommendations from all stakeholders are considered to facilitate necessary up gradation of infrastructure to promote excellent teaching-learning environment at the institute.
- The IT infrastructure is also upgraded in terms of the software again due to frequent revisions and updating in the newer software released. Interactive boards for ICT based teaching and learning process.
- The institution has yearly subscription of Microsoft Campus agreement through which all software products like Windows Operating system, Microsoft office server works.
- ACE Digital Language Lab helps to improve oral and communication skill in English.

Excellent study material used in MIBM Digital Language Lab software is at par with international standards. Using the Lab student can improve the command over their language, gain confidence and get ready for placement challenges like facing interviews, doing presentation, expressing thoughts, etc.

- The open-source software's are updated on quarterly basis (as per requirement of subject).
- CCTV: Installation of CCTV in Campus as well as Institute.
- UPS Backup: 30 KVA is available.
- Printers are purchase as per requirements in adequate numbers.

IT Lab Manual for its use is available on Institute's website at

<https://www.mgi.ac.in/mandatory-disclosures>

8.3B Availability of Learning Management Software (15)

The institution has implemented Learning Management System (LMS). LMS to provides a common language for teachers to discuss and exchange learning and assessment methods. Specific learning outcomes can be derived from the it, though it is most commonly used to assess learning on a variety of cognitive levels. the application refers to the way a student learns, understands, and then applies the concept in real life.

System related Core Functionalities like sharing of Learning Resources, Assessment and External Learning Linkages, 24/7 Learners support, Discussion Forums and Leaner Engagement are basis of teaching-learning.

The faculty's upload PowerPoint and e-content to the LMS which is available to the students through the mobile app. The LMS has provisions for creating online class and e-content. The software also allows the faculties to create assignments and the students may submit assignments to the same software. There is a module in the LMS that helps the faculty's forecast future academic support require for every student.

Online courses can be delivered through the software to the student each online course can be associated with a quiz. The usage record of the software by the student is automatically maintained. The faculties can monitor how many students have completed the online courses. Further, LMS also facilitates tracking of student academic behavior through various data

analysis tools.

Weaker students can be identified through continuous evaluation and various measures are taken to bring their academic standard. At the same time, high performing students are identified and shaped up for better placement opportunities. Also, these students are encouraged to participate in national and international events, publish journal articles and help weaker students through peer guidance.

MULSHI INSTITUTE OF BUSINESS MANAGEMENT (MIBM), PUNE – PHOTO GALLERY



MIBM RECEPTION DESK



CONFERENCE ROOM



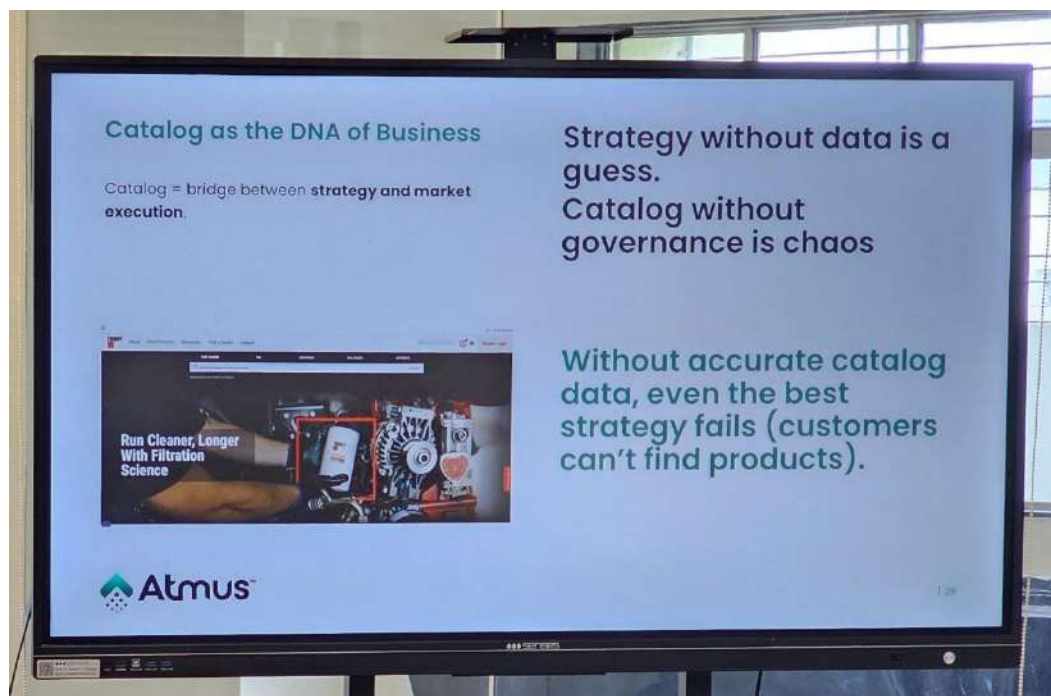
DIRECTORS OFFICE



HOD CABIN



E-LEARNING FACILITY CLASS ROOM



E-LEARNING FACILITY CLASS ROOM



E-LEARNING FACILITY CLASS ROOM



E-LEARNING FACILITY CLASS ROOM



SEMINAR HALL



FACULTY ROOM



LIBRARY



READING HALL



REFERENCE SECTION



COMPUTER LABORATORY



GENSET



RO PLANT



SEAWAGE TREATMENT PLANT



CAFETARIA



IN-DOOR GAMES



OUT-DOOR GAMES



YOGA FOR HEALTH



GIRLS HOSTEL



HOSPITAL FACILITY